

DOCUMENTATION INFORMATION SHEET: A940



<i>Unique ID</i>	<i>Storage Location</i>	<i>Year</i>	<i>Creator</i>
A940	RRFA-01: Box BM36	1980	Robert Rauschenberg

Description
Sierra Club Wildlife annual calendar

Physical Details
spiral bound calendar with annotations, 8 1/2 x 10 1/4" closed

Original Source
Robert Rauschenberg papers. Robert Rauschenberg Foundation Archives, New York

Rights
Copyright is held by the Robert Rauschenberg Foundation.

DOCUMENTATION IMAGES: A940 IMAGE 2

1979 **1980** **1981**

<p>January S M T W T F S 1 2 3 4 5 6 7 8 9 10 11 12 13 14 15 16 17 18 19 20 21 22 23 24 25 26 27 28 29 30 31</p> <p>February S M T W T F S 1 2 3 4 5 6 7 8 9 10 11 12 13 14 15 16 17 18 19 20 21 22 23 24 25 26 27 28</p> <p>March S M T W T F S 1 2 3 4 5 6 7 8 9 10 11 12 13 14 15 16 17 18 19 20 21 22 23 24 25 26 27 28 29 30 31</p> <p>April S M T W T F S 1 2 3 4 5 6 7 8 9 10 11 12 13 14 15 16 17 18 19 20 21 22 23 24 25 26 27 28 29 30</p> <p>May S M T W T F S 1 2 3 4 5 6 7 8 9 10 11 12 13 14 15 16 17 18 19 20 21 22 23 24 25 26 27 28 29 30 31</p> <p>June S M T W T F S 1 2 3 4 5 6 7 8 9 10 11 12 13 14 15 16 17 18 19 20 21 22 23 24 25 26 27 28 29 30</p> <p>July S M T W T F S 1 2 3 4 5 6 7 8 9 10 11 12 13 14 15 16 17 18 19 20 21 22 23 24 25 26 27 28 29 30 31</p> <p>August S M T W T F S 1 2 3 4 5 6 7 8 9 10 11 12 13 14 15 16 17 18 19 20 21 22 23 24 25 26 27 28 29 30 31</p> <p>September S M T W T F S 1 2 3 4 5 6 7 8 9 10 11 12 13 14 15 16 17 18 19 20 21 22 23 24 25 26 27 28 29 30</p> <p>October S M T W T F S 1 2 3 4 5 6 7 8 9 10 11 12 13 14 15 16 17 18 19 20 21 22 23 24 25 26 27 28 29 30 31</p> <p>November S M T W T F S 1 2 3 4 5 6 7 8 9 10 11 12 13 14 15 16 17 18 19 20 21 22 23 24 25 26 27 28 29 30</p> <p>December S M T W T F S 1 2 3 4 5 6 7 8 9 10 11 12 13 14 15 16 17 18 19 20 21 22 23 24 25 26 27 28 29 30 31</p>	<p>January S M T W T F S 1 2 3 4 5 6 7 8 9 10 11 12 13 14 15 16 17 18 19 20 21 22 23 24 25 26 27 28 29 30 31</p> <p>February S M T W T F S 1 2 3 4 5 6 7 8 9 10 11 12 13 14 15 16 17 18 19 20 21 22 23 24 25 26 27 28 29</p> <p>March S M T W T F S 1 2 3 4 5 6 7 8 9 10 11 12 13 14 15 16 17 18 19 20 21 22 23 24 25 26 27 28 29 30 31</p> <p>April S M T W T F S 1 2 3 4 5 6 7 8 9 10 11 12 13 14 15 16 17 18 19 20 21 22 23 24 25 26 27 28 29 30</p> <p>May S M T W T F S 1 2 3 4 5 6 7 8 9 10 11 12 13 14 15 16 17 18 19 20 21 22 23 24 25 26 27 28 29 30 31</p> <p>June S M T W T F S 1 2 3 4 5 6 7 8 9 10 11 12 13 14 15 16 17 18 19 20 21 22 23 24 25 26 27 28 29 30</p> <p>July S M T W T F S 1 2 3 4 5 6 7 8 9 10 11 12 13 14 15 16 17 18 19 20 21 22 23 24 25 26 27 28 29 30 31</p> <p>August S M T W T F S 1 2 3 4 5 6 7 8 9 10 11 12 13 14 15 16 17 18 19 20 21 22 23 24 25 26 27 28 29 30 31</p> <p>September S M T W T F S 1 2 3 4 5 6 7 8 9 10 11 12 13 14 15 16 17 18 19 20 21 22 23 24 25 26 27 28 29 30</p> <p>October S M T W T F S 1 2 3 4 5 6 7 8 9 10 11 12 13 14 15 16 17 18 19 20 21 22 23 24 25 26 27 28 29 30 31</p> <p>November S M T W T F S 1 2 3 4 5 6 7 8 9 10 11 12 13 14 15 16 17 18 19 20 21 22 23 24 25 26 27 28 29 30</p> <p>December S M T W T F S 1 2 3 4 5 6 7 8 9 10 11 12 13 14 15 16 17 18 19 20 21 22 23 24 25 26 27 28 29 30 31</p>	<p>January S M T W T F S 1 2 3 4 5 6 7 8 9 10 11 12 13 14 15 16 17 18 19 20 21 22 23 24 25 26 27 28 29 30 31</p> <p>February S M T W T F S 1 2 3 4 5 6 7 8 9 10 11 12 13 14 15 16 17 18 19 20 21 22 23 24 25 26 27 28 29</p> <p>March S M T W T F S 1 2 3 4 5 6 7 8 9 10 11 12 13 14 15 16 17 18 19 20 21 22 23 24 25 26 27 28 29 30 31</p> <p>April S M T W T F S 1 2 3 4 5 6 7 8 9 10 11 12 13 14 15 16 17 18 19 20 21 22 23 24 25 26 27 28 29 30</p> <p>May S M T W T F S 1 2 3 4 5 6 7 8 9 10 11 12 13 14 15 16 17 18 19 20 21 22 23 24 25 26 27 28 29 30 31</p> <p>June S M T W T F S 1 2 3 4 5 6 7 8 9 10 11 12 13 14 15 16 17 18 19 20 21 22 23 24 25 26 27 28 29 30</p> <p>July S M T W T F S 1 2 3 4 5 6 7 8 9 10 11 12 13 14 15 16 17 18 19 20 21 22 23 24 25 26 27 28 29 30 31</p> <p>August S M T W T F S 1 2 3 4 5 6 7 8 9 10 11 12 13 14 15 16 17 18 19 20 21 22 23 24 25 26 27 28 29 30 31</p> <p>September S M T W T F S 1 2 3 4 5 6 7 8 9 10 11 12 13 14 15 16 17 18 19 20 21 22 23 24 25 26 27 28 29 30</p> <p>October S M T W T F S 1 2 3 4 5 6 7 8 9 10 11 12 13 14 15 16 17 18 19 20 21 22 23 24 25 26 27 28 29 30 31</p> <p>November S M T W T F S 1 2 3 4 5 6 7 8 9 10 11 12 13 14 15 16 17 18 19 20 21 22 23 24 25 26 27 28 29 30</p> <p>December S M T W T F S 1 2 3 4 5 6 7 8 9 10 11 12 13 14 15 16 17 18 19 20 21 22 23 24 25 26 27 28 29 30 31</p>
--	---	---

ELEANDRO CAPANEGRA TO CAPTIVA - EYES
BOB R. SHAW IN M.V.C. - FEB 4th TO APRIL 5th/81
B.P. SHOWING EDWARDS' COURAGE
BOB R. SHAW IN LONG APRIL 28th TO MAY 2nd
B.P. SHOWING NEW MEXICO

The Sierra Club, founded in 1892 by John Muir, has devoted itself to the study and protection of the earth's scenic and ecological resources—mountains, wetlands, woodlands, wild shores and rivers, deserts and plains. Its publications are part of the nonprofit effort the Club carries on as a public trust. There are more than 50 chapters coast to coast, in Canada, Hawaii, and Alaska.

For information about how you may participate in the Club's programs to enjoy and preserve wilderness and the quality of life, please address inquiries to: Sierra Club, 530 Bush Street, San Francisco, California 94108.

This calendar was printed in Italy by A. Mondadori, Verona, Italy. Color separations by A. Mondadori, Verona, Italy. Distribution is by Charles Scribner's Sons, 597 Fifth Avenue, New York, New York 10017. Copyright © 1979 Sierra Club. All rights reserved. No part of the contents of this calendar may be reproduced without the consent of the publishers, Sierra Club and Charles Scribner's Sons.

Cover: Walrus (*Odobenus rosmarus*), Bristol Bay, Alaska. By Len Lee Rue III/Tom Stack & Associates.

Astronomical information is given in Eastern Standard Time.

If the animals could speak...

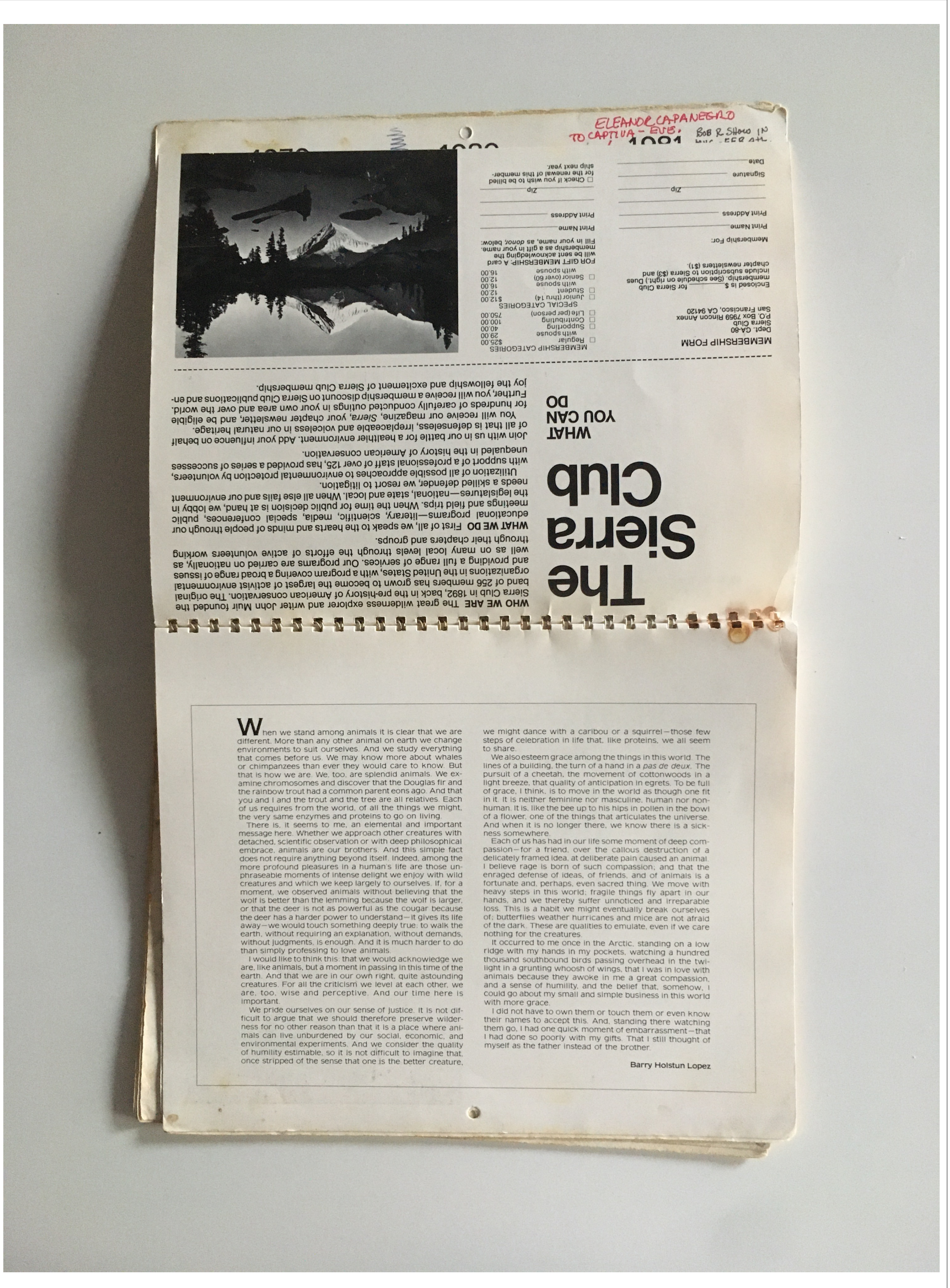


BLUE FOOTED BOOBIES - JOHN BLAUSTEIN

...what would they say? Sierra Club members have been working since 1892 to preserve and protect the natural habitat of all living creatures, man and animal alike.

Your membership will help us in our efforts on behalf of all those who have little voice in how we treat our world. After all, they are a large part of what makes this world worth living in.

DOCUMENTATION IMAGES: A940 IMAGE 3



ELEANOR CAPANESE
TO CAPTIVA - EUB. BOB R. SHAW (N)
1001



MEMBERSHIP FORM

Dept. CA-80
Sierra Club
P.O. Box 7359 Rincon Annex
San Francisco, CA 94120

Enclosed is \$ _____ for Sierra Club membership. (See schedule on right.) Dues include subscription to *Sierra* (\$3) and chapter newsletters (\$1).

Membership For: _____
Print Name _____
Print Address _____
Zip _____
Signature _____
Date _____

Regular
 with spouse
 Supporting
 Contributing
 Life (per person)

SPECIAL CATEGORIES
\$12.00 Junior (thru 14)
\$12.00 Student
\$16.00 with spouse
\$16.00 Senior (over 60)
\$16.00 with spouse
\$16.00

FOR GIFT MEMBERSHIP: A card will be sent acknowledging the membership as a gift in your name. Fill in your name, as donor, below.

Print Name _____
Print Address _____
Zip _____

Check if you wish to be billed for the renewal of this membership next year.

WHO WE ARE The great wilderness explorer and writer John Muir founded the Sierra Club in 1892, back in the pre-history of American conservation. The original band of 256 members has grown to become the largest of activist environmental organizations in the United States, with a program covering a broad range of issues and providing a full range of services. Our programs are carried on nationally, as well as on many local levels through the efforts of active volunteers working through their chapters and groups.

WHAT WE DO First of all, we speak to the hearts and minds of people through our educational programs—literary, scientific, media, special conferences, public meetings and field trips. When the time for public decision is at hand, we lobby in the legislatures—national, state and local. When all else fails and our environment needs a skilled defender, we resort to litigation.

Utilization of all possible approaches to environmental protection by volunteers, with support of a professional staff of over 125, has provided a series of successes unrequited in the history of American conservation.

Join with us in our battle for a healthier environment. Add your influence on behalf of all that is defenseless, irreplaceable and voiceless in our natural heritage. You will receive our magazine, *Sierra*, your chapter newsletter, and be eligible for hundreds of carefully conducted outings in your own area and over the world. Further, you will receive a membership discount on Sierra Club publications and enjoy the fellowship and excitement of Sierra Club membership.

WHAT YOU CAN DO
The Sierra Club

When we stand among animals it is clear that we are different. More than any other animal on earth we change environments to suit ourselves. And we study everything that comes before us. We may know more about whales or chimpanzees than ever they would care to know. But that is how we are. We, too, are splendid animals. We examine chromosomes and discover that the Douglas fir and the rainbow trout had a common parent eons ago. And that you and I and the trout and the tree are all relatives. Each of us requires from the world, of all the things we might, the very same enzymes and proteins to go on living.

There is, it seems to me, an elemental and important message here. Whether we approach other creatures with detached, scientific observation or with deep philosophical embrace, animals are our brothers. And this simple fact does not require anything beyond itself. Indeed, among the more profound pleasures in a human's life are those unphraseable moments of intense delight we enjoy with wild creatures and which we keep largely to ourselves. If, for a moment, we observed animals without believing that the wolf is better than the lemming because the wolf is larger, or that the deer is not as powerful as the cougar because the deer has a harder power to understand—it gives its life away—we would touch something deeply true: to walk the earth, without requiring an explanation, without demands, without judgments, is enough. And it is much harder to do than simply professing to love animals.

I would like to think this: that we would acknowledge we are, like animals, but a moment in passing in this time of the earth. And that we are in our own right, quite astounding creatures. For all the criticism we level at each other, we are, too, wise and perceptive. And our time here is important.

We pride ourselves on our sense of justice. It is not difficult to argue that we should therefore preserve wilderness for no other reason than that it is a place where animals can live unburdened by our social, economic, and environmental experiments. And we consider the quality of humility estimable, so it is not difficult to imagine that, once stripped of the sense that one is the better creature,

we might dance with a caribou or a squirrel—those few steps of celebration in life that, like proteins, we all seem to share.

We also esteem grace among the things in this world. The lines of a building, the turn of a hand in a *pas de deux*. The pursuit of a cheetah, the movement of cottonwoods in a light breeze, that quality of anticipation in egrets. To be full of grace, I think, is to move in the world as though one fit in it. It is neither feminine nor masculine, human nor non-human. It is, like the bee up to his hips in pollen in the bowl of a flower, one of the things that articulates the universe. And when it is no longer there, we know there is a sickness somewhere.

Each of us has had in our life some moment of deep compassion—for a friend, over the callous destruction of a delicately framed idea, at deliberate pain caused an animal. I believe rage is born of such compassion, and that the enraged defense of ideas, of friends, and of animals is a fortunate and, perhaps, even sacred thing. We move with heavy steps in this world; fragile things fly apart in our hands, and we thereby suffer unnoticed and irreparable loss. This is a habit we might eventually break ourselves of; butterflies weather hurricanes and mice are not afraid of the dark. These are qualities to emulate, even if we care nothing for the creatures.

It occurred to me once in the Arctic, standing on a low ridge with my hands in my pockets, watching a hundred thousand southbound birds passing overhead in the twilight in a grunting whoosh of wings, that I was in love with animals because they awoke in me a great compassion, and a sense of humility, and the belief that, somehow, I could go about my small and simple business in this world with more grace.

I did not have to own them or touch them or even know their names to accept this. And, standing there watching them go, I had one quick moment of embarrassment—that I had done so poorly with my gifts. That I still thought of myself as the father instead of the brother.

Barry Holstun Lopez

DOCUMENTATION IMAGES: A940 IMAGE 4

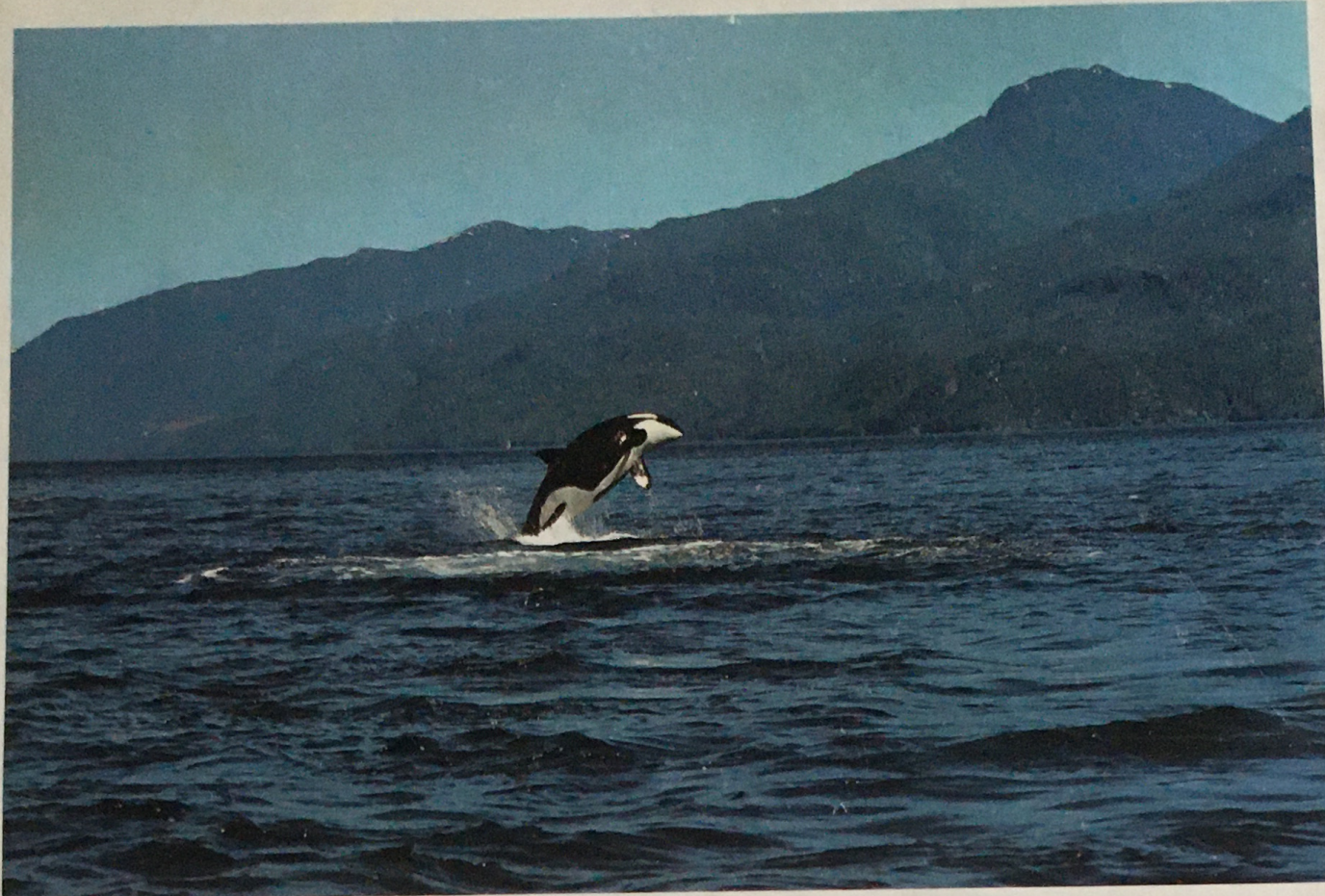


Young cheetah (*Acinonyx jubatus*), Amboseli, Kenya. By M. P. Kahl/Bruce Coleman, Inc.

January 1980

Sunday	Monday	Tuesday	Wednesday	Thursday	Friday	Saturday
		1 Woody Allen Party New Year's Day	2 All day Movies w/ TVB / RR Full Moon	3 TVB + RR Back to Captiva	4	5
6 Rubin Freida marian to Captiva	7 Purchase Datsun Truck "BLUE"	8	9 TVB spoke to Dan Burden about Shared Force with South Seas Plantation	10 Lief Johnson to Dinner Last Quarter	11 Fish House Termite Proofed	12 Gorewitz's and Bandwhite leave Captiva
13 Eric to Tampa in BLUE RR writes d.d. about Trade of prop. for Change with Captiva. Performance Arts	14	15 Martin Luther King Jr's Birthday	16	17 Art Cop calls Mike Jackson calls Ferry to Town New Moon	18	19 U. of S. Fla. opening RR-TVB to Tampa
20 RR - T.V.B. drive back from Tampa Eric to Tampa in BLUE	21 Contractor - Bob Strasbaugh visit of buy property	22 Amil uses 4x5 first time for RR. Dan Spice works on Tropic X-mas gifts	23 BANK PEOPLE TO CAPTIVA - FINALIZE CONTRACT	24 EDISON SELECTION First Quarter	25	26
27	28	29	30	31 HANG-SHOW EDISON C.C. RR. worked in Fishhouse Full Moon		

DOCUMENTATION IMAGES: A940 IMAGE 5



Killer whale (*Orcinus orca*), near Alert Bay, British Columbia. By Peter Thomas.

February 1980

Sunday	Monday	Tuesday	Wednesday	Thursday	Friday	Saturday
					1 Don Saff to Captiva	2 E.C.C. Show OPENING - 7-10
3 E.C.C. OPENING FOR STUDENTS 1-5 pm	4	5 JOHN POWERS TO CAPTIVA	6	7 R.R. to Ft. Myers	8	9 Last Quarter
10	11	12 Lincoln's Birthday	13	14	15	16 Total Solar Eclipse 3:59 A.M. New Moon
17	18 Washington's Birthday	19 Opening of Leo's New Space	20 Ash Wednesday	21	22 First Quarter	23
24	25	26	27 End E.C.C. Show	28 Pack up Edison Show	29	

None

DOCUMENTATION IMAGES: A940 IMAGE 6



Red fox (*Vulpes fulva*), Sibley Provincial Park, Ontario. By Brian Milne.

March 1980

22x28 16x20

Poster 18x24"

KAMPINSKI →

Sunday	Monday	Tuesday	Wednesday	Thursday	Friday	Saturday
						1 Penumbral Lunar Eclipse 3:45 pm Full Moon
2	3	4	5	6 Name Photo Gallery Show & Choose 46 photos for it	7	8
9 Last Quarter	10	11	12	13	14	15
16 To BERLIN	17	18	19	20 ARRIVE VENICE DINNER WITH LEO Equinox	21 VENICE OPENING A TILIO PARTY	22
23 First Quarter OPENING BENNY B.B. Palm Sunday	24 5:20 REBUS BISOPPA AIR TRANCE	25 NYC. LOTTES R&B 11 AM - 8:45 BOB P. CALL CRAIG	26	27	28	29 PEOPLE AT LEO R.R. Leo Café Show Opening PEOPLE INTERVIEW

LEVEL 100

GRAY GARDEN OR ROSE BAY - D.K.

RR TO FLY TO CANTINA

DOCUMENTATION IMAGES: A940 IMAGE 7



Greater sandhill cranes (*Grus canadensis tabida*), Bosque del Apache National Wildlife Refuge, Socorro County, New Mexico. By Gary R. Zahm.

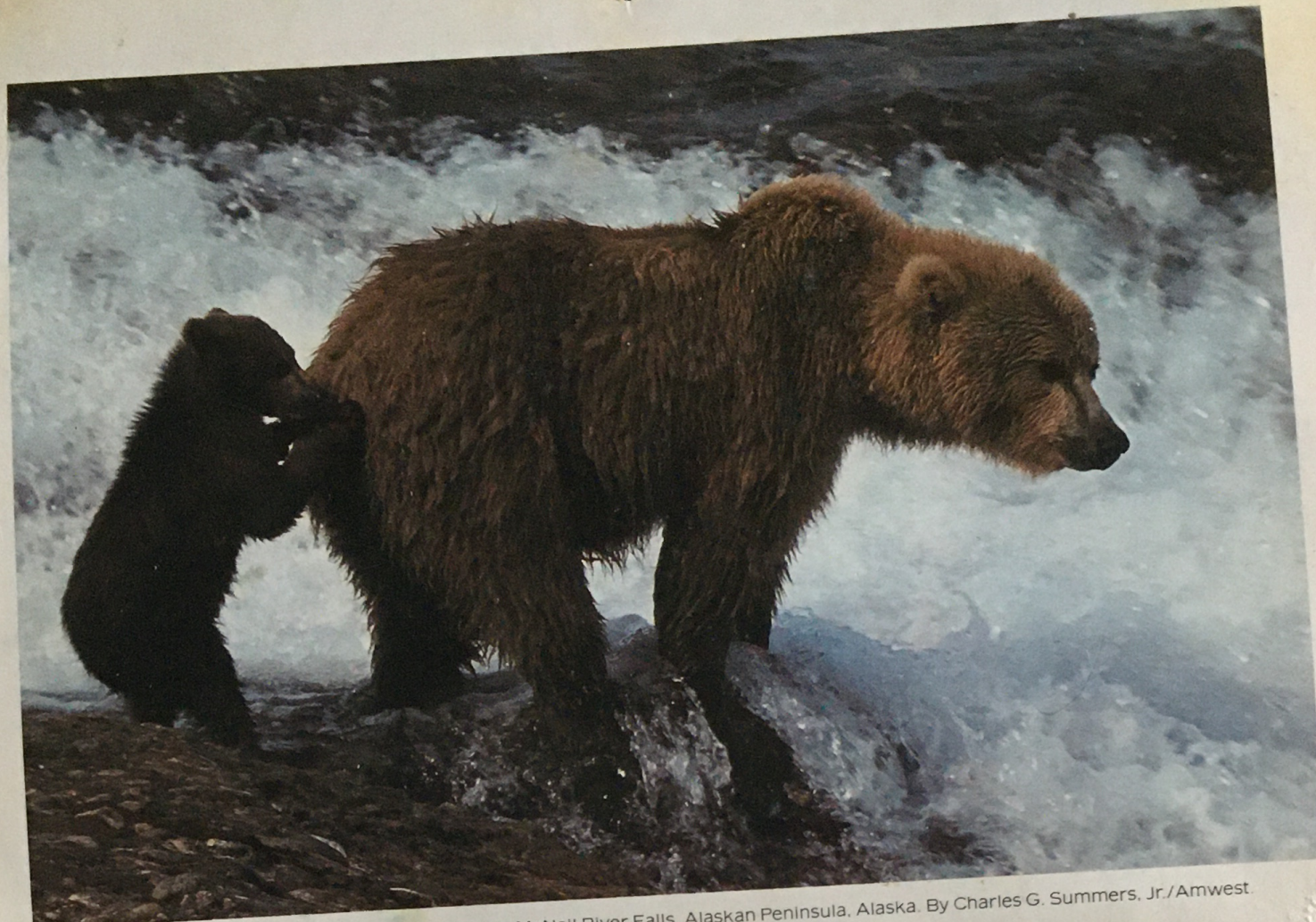
- April 1980

Professional Camera Repair Service
37 W. 47th

Sunday	Monday	Tuesday	Wednesday	Thursday	Friday	Saturday
		1 Passover	2 TIM + ERIC TO CAPTIVA AGATHE	3 Eric to Tampa	4 BOB P. WORK AT STYRIA STUDIOS 4th to 10th APRIL	5 Good Friday
6 Eric to Captiva Easter Sunday	7 PEOPLE MAG TO FLA.	8 Eric Leaves Captiva Last Quarter	9 PEOPLE Leave Captiva	10 Interview: Island Report	11 BOB P. TO CAPTIVA FEB 127 12:05 REMBERDY 3-52 FORT MYERS	12 Doug sodling assistant to pick up CLOISTERS
13 BOB P. TO CAPTIVA	14 New Moon	15	16 Rubin to Captiva at 2pm	17	18 LEON TO CAPTIVA FOR VACATION	19 RUBIN BACK TO N.Y.C.
20 OPENING R.R. PHOTO SHOW AT SANDELL PHOTO GALLERY	21 John Muir's Birthday 1838 First Quarter	22 BOB P. to town - U.P. INC. PROJECT	23	24	25	26
27 Doug Christmas & Wayne to Captiva	28	29	30 Full Moon			

472-5777

DOCUMENTATION IMAGES: A940 IMAGE 8



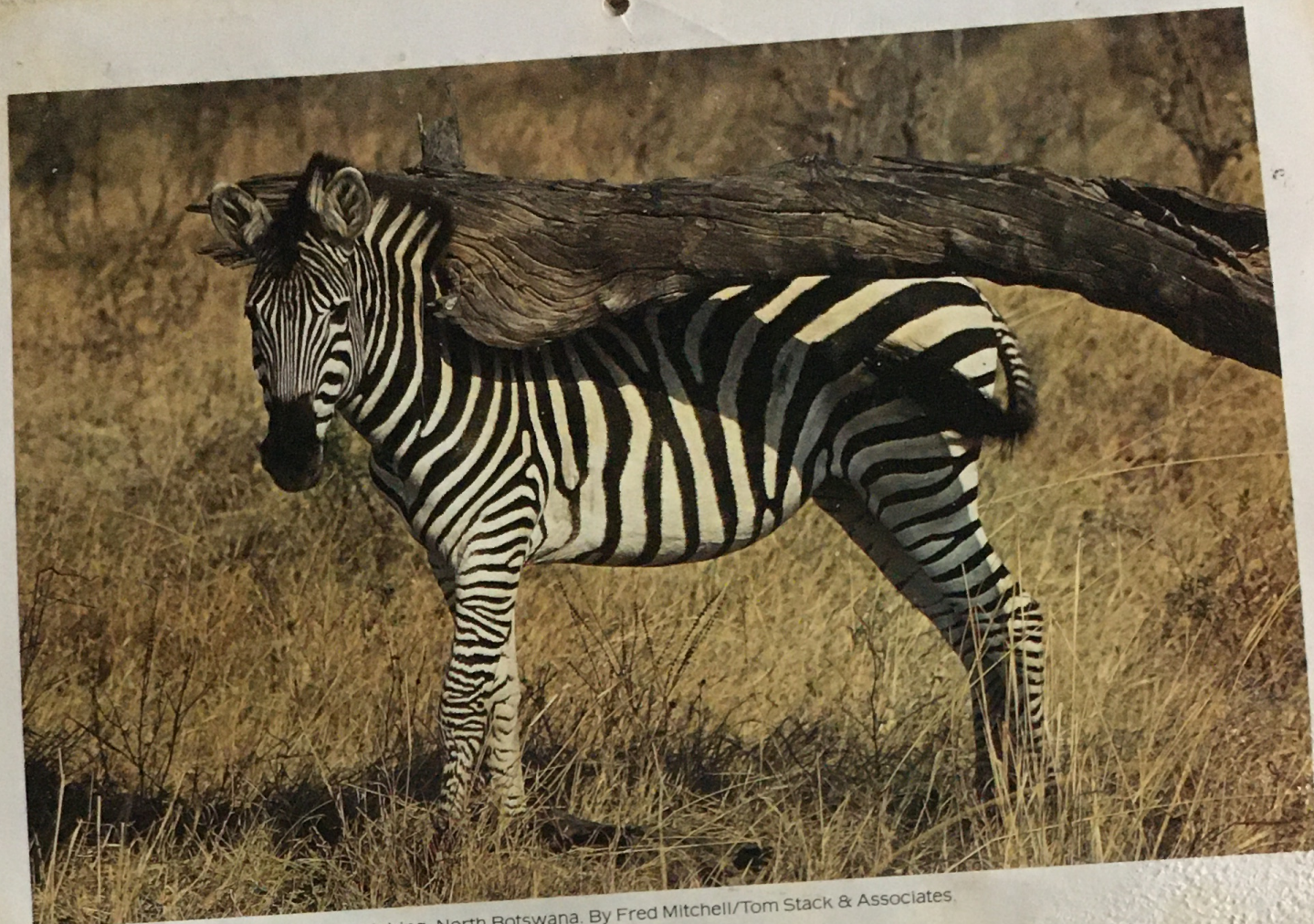
Alaskan brown bear (*Ursus arctos*) with cub, fishing at McNeil River Falls, Alaskan Peninsula, Alaska. By Charles G. Summers, Jr./Amwest

May 1980

Lighting - stainless #4600 Bob Hawthorn
KARL WHITMAN 472-2241
NORMAN - BURNSTEIN 202-331-7500

Sunday	Monday	Tuesday	Wednesday	Thursday	Friday	Saturday
				1	2	3
4	5	6	7 ADI - TO CAPTIVA -	8 RR + TERRY TO HARMONIA TUDO VIDEO FOR CHILDRENS HDSP	9 ADDI TO TAM PA 3:00 MRS WEEKS	10
RUBINS PARTY -			Last Quarter			
11	12 CHILDREN'S HOSPITAL BOB R. PEOPLES MAG. COMES OUT BOB & TERRY TO TOWN. VITEO.	13 FINNISH VIDEO	14	15 PICARD OPEN. MADIA.	16 DICKY TO TINA - CAPTIVA RR - CASTELLI SONNABEND + TATE MUSEUM AT NOVA	17
			New Moon			
18 DOWG TO CAPT.	19 RR + TERRY TO CAPTIVA	20 SID TO CAPTIVA	21	22 MORNING SID BACK TO C.A. PETERSEN TO CAL	23	24 CBS NEWS VIDEO AT CAPTIVA
			First Quarter			
25	26 RUBIN BACK TO NYC CRATE SUMMER SHOW FOR SONNABEND Memorial Day Victoria Day (Canada)	27	28	29 No-Risk Termito For U.P.	30	31 Watch Papers for Barium Missal Launch
			Sierra Club organized. 1892	Full Moon		

DOCUMENTATION IMAGES: A940 IMAGE 9



Burchell's zebra (*Equus burchelli*) scratching, North Botswana. By Fred Mitchell/Tom Stack & Associates.

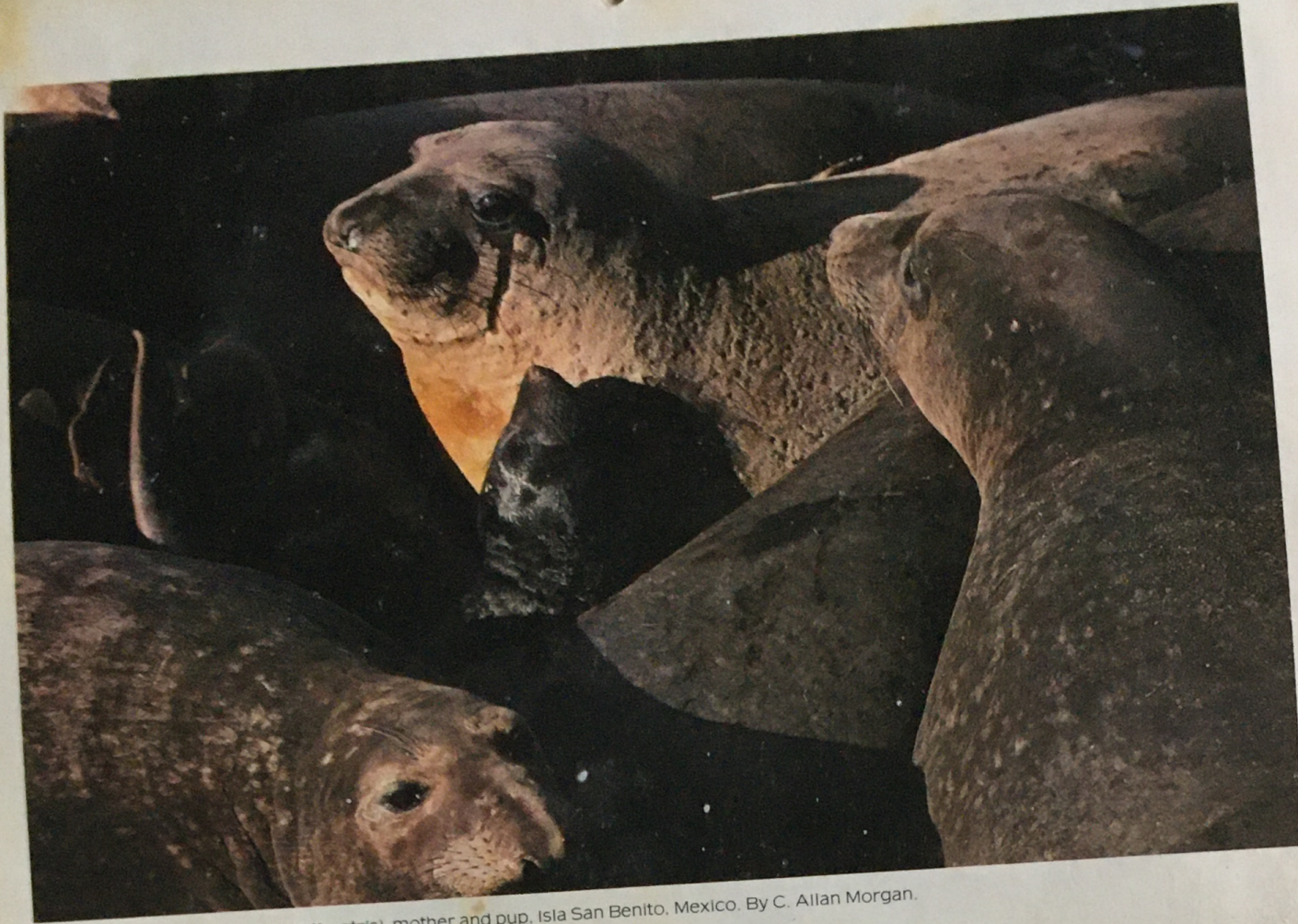
June 1980

PRINTS 10 → 8X10
BOBOAR - PHOTOS

Sunday	Monday	Tuesday	Wednesday	Thursday	Friday	Saturday
1	2	3	4	5 Last Quarter	6 RR Opening Anniston Museum in Ala	7
8	9 ILEANA TO PARIS & BRISIL VENICE. LEO. LONDON PARIS BASIL	10 VICTORVILLE	11 BRADSHAW -	12 New Moon	13	14
15 TADS NM	16 BRADSHAW	17	18	19	20 BOB P. BACK FROM CALIF. First Quarter	21 Solstice
22	23	24 Deadline for CLICHE	25	26	27 BOB P. TO TOWN WITH KID - TO DOCTOR.	28 TANYA BIRTHDAY 3:30 P.M. BOB TO TANYA'S BACK SAME DAY - Full Moon
29	30 BOB P. DENTIST. 1:00 P.M. MOVIE - BRUBAKER					

LANE KIRK LANE

DOCUMENTATION IMAGES: A940 IMAGE 10



Elephant seals (*Mirounga angustirostris*), mother and pup, Isla San Benito, Mexico. By C. Allan Morgan.

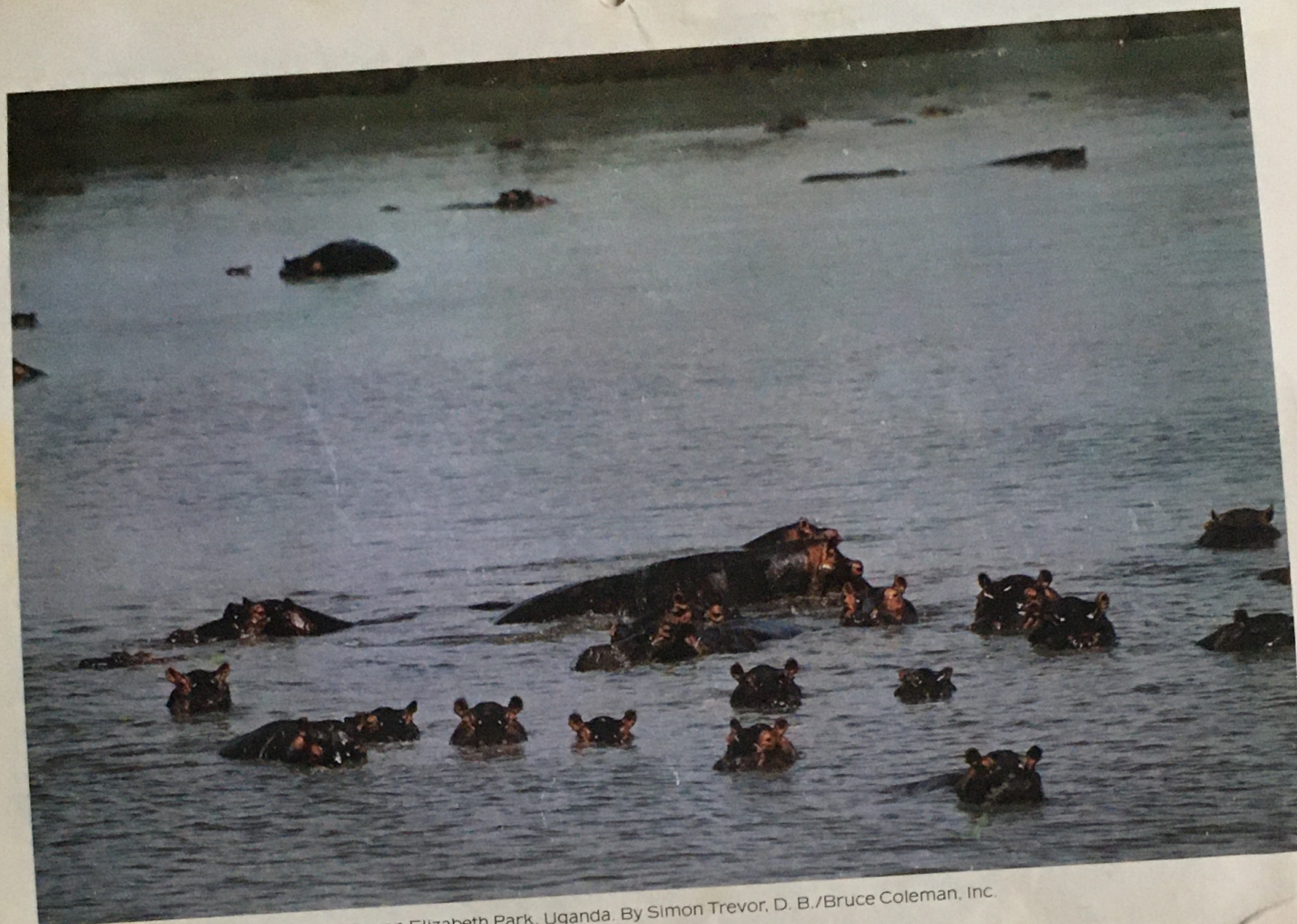
July 1980

Sunday	Monday	Tuesday	Wednesday	Thursday	Friday	Saturday
	1 <i>LEO PULLS OUT.</i>	2	3	4 <i>Possibility of Leon for divorce</i>	5	
6	7 <i>Leon's Birthda</i>	8 <i>Dominion Day (Canada)</i>	9 <i>9:30</i>	10 <i>9:30</i>	11 <i>Independence Day</i>	12 <i>Last Quarter</i>
13 <i>CHRIS R. BIRTHDAY PARTY</i>	14	15	16 <i>RICK + ERIC TO WASH. DC.</i>	17	18	19 <i>New Moon</i>
20	21	22 <i>DAVID WHITE TO CAPTIVA</i>	23	24 <i>TUB DEPARTS FOR ORLANDO.</i>	25	26
27 <i>Penumbral Lunar Eclipse. 2:08 PM</i>	28 <i>BOB R. DENTIST</i>	29 <i>→ 12:30</i>	30	31		

POLARIZED PLEXIE

558
901-70

DOCUMENTATION IMAGES: A940 IMAGE 11



Hippos (*Hippopotamus amphibius*), Queen Elizabeth Park, Uganda. By Simon Trevor, D. B./Bruce Coleman, Inc.

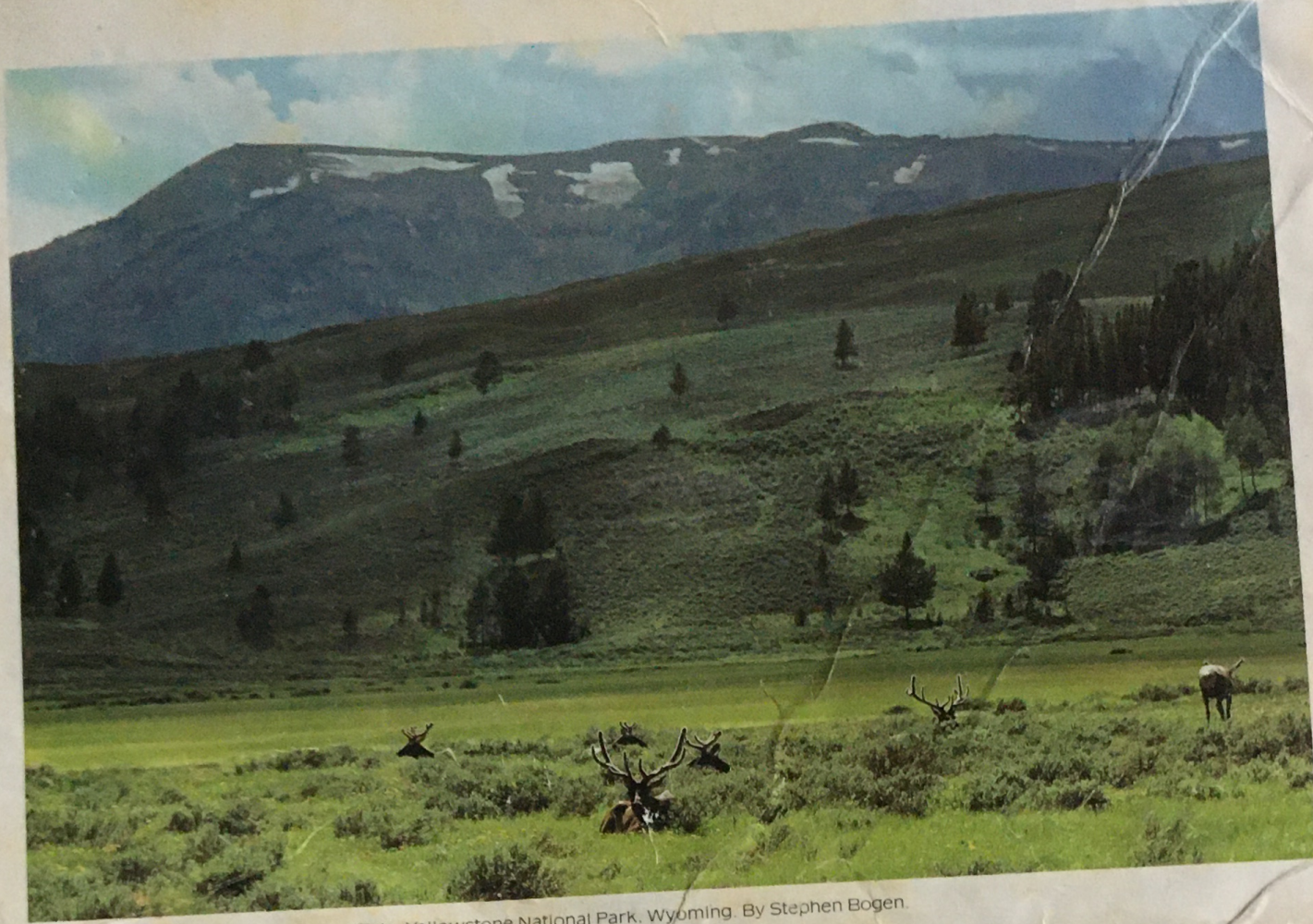
August 1980

EQUISTRIAN RAUSCHENBERG WINNINGS RACES
BOB HITCHES 2120

Sunday	Monday	Tuesday	Wednesday	Thursday	Friday	Saturday
					1	2
3 Last Quarter	4	5	6 CHARLIE YODER TO CAPTIVA DON SAFF TO CAPTIVA WITH SON, JEFF	7 RICKY BACK TO LAFAYETTE, LA. DON SAFF & JEFF BACK TO TAMPA	8	9 CHARLEY TAKES PAINTINGS TO NYC DINNER AT BUBBLE ROOM.
10 STRONG WAVES Annular Solar Eclipse 2:17 PM New Moon	11 ANDERS.. TORNBURG CALLED BOB ABOUT MOVEMENT	12	13 BOB & BOB DRIVE TO BAYSHORE LOOK AT 5 ACRES HORSE RANCH-	14 BOB P. DENTIST- 3:00-P.M.-	15	16 BOB & TODD TO N.Y.C.- MUDPOTS
17 BOSTON SYMPHONY POSTER DONE MUD CLUB % NINA HAGAN 2 NEW ETCHINGS	18 SIGNED 1ST RAZORBACK BUNCH. + NEXT TO LAST GLACIAL DELTA LITHO.	19 TODD TO CONN. NEW STONEAT 38 BILL + TOM + LINCOLN + LORENZO STOLEN + FOUND	20 BOB & TODD BACK TO CAPTIVA PICASSO SHOW	21 ERIC & ALEX. DRIVE BOBS PAINTINGS TO CALIFORNIA BP GETS RAISE	22 BP AT EDISON TURTLE LADY FROM ALABAMA ERIC IN SAN ANTONIO GLORIA LURIA CALLED	23 NEED TO LIVE + THE WORLD - EARL'S LARGEST PAINTING BEGUN. DEDICATED TO THE LEOPARD MOTH + OTHERS
24 SHEEL & ERIC BOB WORKING ON EARL'S LARGEST PAINTING	25 ERIC IN L.A. Penumbral Lunar Eclipse 10:31 PM Full Moon	26 TERRY BACK TO CAPTIVA	27	28	29	30
31						

50/11

DOCUMENTATION IMAGES: A940 IMAGE 12



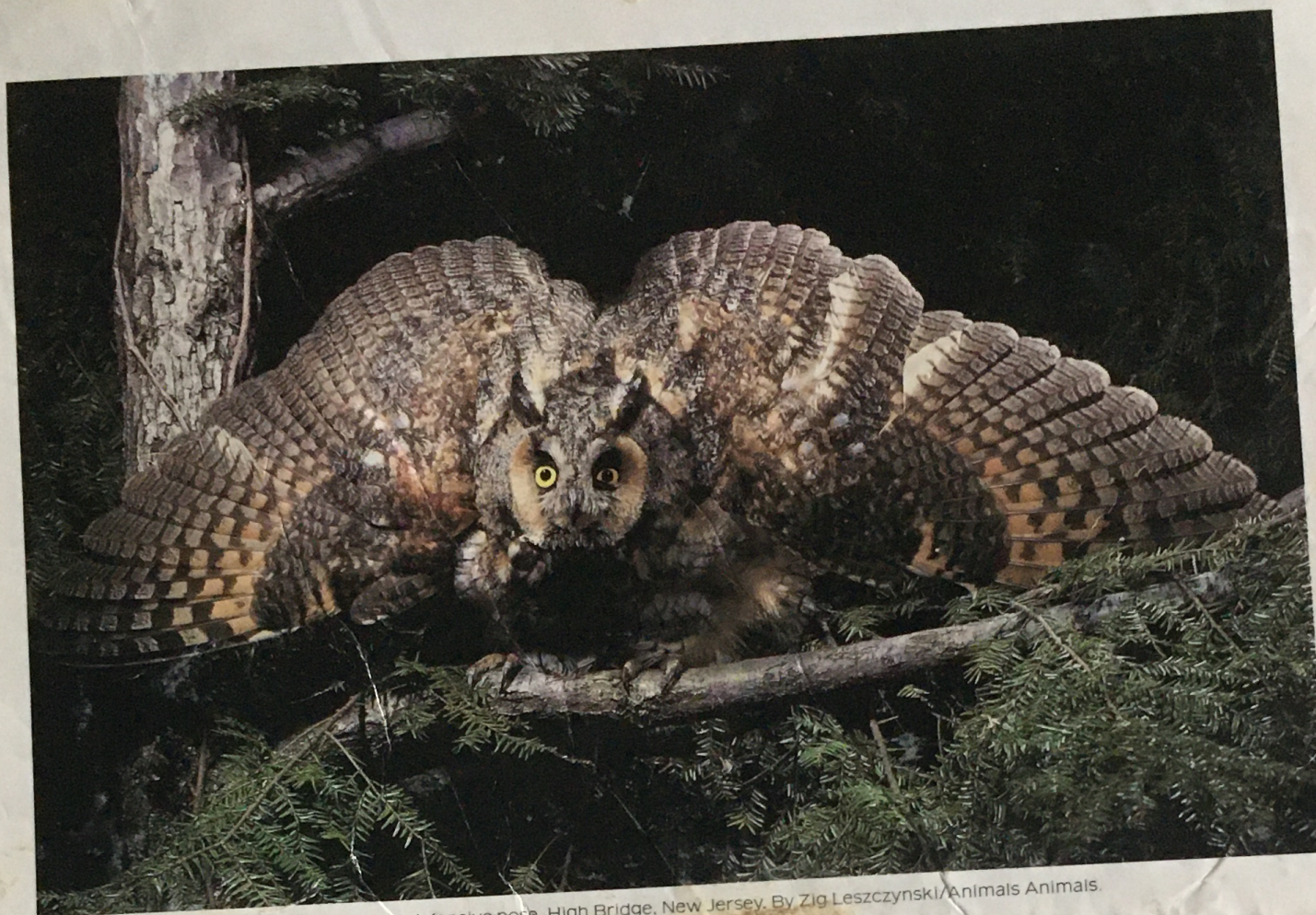
Elk (*Cervus canadensis*), Swan Lake Flats, Yellowstone National Park, Wyoming. By Stephen Bogen.

September 1980

SKY CORNER

Sunday	Monday	Tuesday	Wednesday	Thursday	Friday	Saturday
	1 Proposed Labor Day Equinox Last Quarter	2 Zhang Cloisters ACE. LA.	3 SAN FRANCISCO 8:00 SHUTTLE BACK TO LA FOR ART COUNCIL LECTURE AT GALLERY	4 ROCKEFELLER PRESS CONFERENCE		6 BOB & TERRY BACK TO CAPTIVA
7	8	9 New Moon	10 BOB CLOSING ON HORSE RANCH 2:30 P.M. -	11 Rosh Hasha'han	12 BOB P. TO N.Y.C. FOR PICASSO SHOW ILEANA TO M.Y.C. -	13
14	15	16	17 BOB P. BACK TO CAPTIVA First Quarter	18	19	20 SEPT. 20 - NOV. 25 B.R. SHOW IN KOP. Yom Kippur
21	22 SACHIN LEAVING TO CAPTIVA Equinox	23	24 Full Moon	25 DORA TO CAPTIVA	26	27
28	29	30 Last Quarter				

DOCUMENTATION IMAGES: A940 IMAGE 13



Long-eared owl (*Asio otus wilsonianus*) in defensive pose. High Bridge, New Jersey. By Zig Leszczynski/Animals Animals.

October 1980

Sunday	Monday	Tuesday	Wednesday	Thursday	Friday	Saturday
Some time Gold Opening Equitable Bank			1	2	3 3 SEASONS Childrens Hosp DINNER 4:30	4 COCKTAILS AT MUS. 5-7 PM. BALTIMORE MUS. RR OPENING 9-12 EQUITABLE AT MUS.
5 TANYA DEDICATION DINNER FOLLOWING	6 TANYA	7 TANYA PHOTO PROOF LARGE PRINT	8 NYC Volunteer EASTER MOVIES	9 NYC MOVIES ILEANA	10 NYC BOSTON MOVIES	11 BOSTON OPENING RITZ SHERIDAN HYATT TRAIN JAPANESE REST. MOVIES.
12 TANYA BOSTON HYATT IN CAMBRIDGE	13 TANYA COLOR PRINT LARGEST	14 RR+TV B LEAVE L.I. FOR ASBURY PARK	15 ASBURY PK TO RYAN CITY N.J. RESTAURANT TUB WASH 50.00 AT 5:00.	16 ATLANTIC CITY TO SALISBURY MD.	17 LEAVE FOR CAPTIVA DORRINSKIFF PARTY.	18 CAPTIVA RUTH DONN VISIT NEW DRAWINGS
19 NYC SHERIDAN	20 CAPTIVA	21 CAPTIVA	22 TB+RR FLY TO BALTIMORE SALISBURY MD. AFTER BIRTHDAY BREAKFAST.	23 LEAVE BETHANY FOR SALISBURY	24 LEAVE SALISBURY DRIVE IN RAIN TO VIRGINIA BEACH	25 PHOTOS VIRGINIA B.
26 TB+RR FLY TO V.C.	27 V.C.	28 V.C. RR TALK+VIDE OPENING NEW DRAWINGS + CLOISTER	29 FLY TO L.A.	30 MEETING DAVID WELLS PARRIS BUILDING. JJAT 6PM IN - GRINLEN AT NITE	31 NORFOLK TO MANTED OUTTERBANKS	

DOCUMENTATION IMAGES: A940 IMAGE 14



Timber wolf (*Canis lupus*), Superior National Forest, Minnesota. By John Ebeling/Bruce Coleman, Inc.

November 1980

PH	TO	DATE	TIME	AAA
PH	Flight to Frankfurt			
FROM	Nov: 30 - Sun			
OF	Ft Myers - Delta # 134	1:00 pm	→ 3:10	
Atlanta - Delta # 14	6:35	→ 9:05 AM		
Frankfurt - 9:05 AM	Museum: 617092			
Hotel: Frankfurter House	Director: Galwitz			
Frankfurt - Luftansa # 43	9:40 AM	→ 1:15 pm		
Dec 4 Thurs Atlanta → FMY EASTERN				
Phoned <input type="checkbox"/>	Call <input type="checkbox"/>	Returned <input type="checkbox"/>	Call <input type="checkbox"/>	# 12-7 3:58 → 5:26 pm
9	TO Vogue Interview			
FROM	Wednesday Nov 26			
OF	Jordan Mejias			
212-989-4701				
Arrive East # 677	12:10 pm			
Depart East # 498	10:20 pm			
we will pick up at airport				
Phoned <input type="checkbox"/>	Call <input type="checkbox"/>	Returned <input type="checkbox"/>	Call <input type="checkbox"/>	Want To <input type="checkbox"/>
See You <input type="checkbox"/>	Will Call <input type="checkbox"/>	Again <input type="checkbox"/>	Was In <input type="checkbox"/>	See Operator <input type="checkbox"/>
30				
				Thanksgiving

DATE	TIME	AAA
Friday		
Saturday		
7		
8		
14		
15		
21		
22		
28		
29		

Handwritten notes on calendar:

- Friday: SACHIKA + AGATE - BACK NYC
- Saturday: 1 TERMINAL ONE DAM FULL LEAVE MATED N.C. KILL DEVIL HILL DRIVE TO JACKSONVILLE PHOTOS FIRST IN N.C. 2 DAYS. JAPANESE DISASTER
- 15: Irish + GLACIAL PEONY Mussett of Art + History Geneva Switz
- 21: 21 service - FOR sig. IN rating

DOCUMENTATION IMAGES: A940 IMAGE 15



Timber Superior National Forest, Minnesota. By John Ebeling/Bruce Coleman, Inc.

Sunday	Monday	Tuesday	Wednesday	Thursday	Friday	Saturday
					SACHIKA + ACATE - BACK NYC	1 TERMINAS DUE DAY FLLI. LEAVE MATED NC. KILL DEVIL HILL DRIVE TO JACKSONVILLE PHOTOS FIRST IN N.C. 2 DAYS. JAPANESE DINNER
ATLAS CLEANED ERIC TO WASH D.C. 2 ARRIVE MYRTLE BEACH SUNDAY 10:00	3	4	5 TODD BACK TO CAPTIVA	6	7	8
		Election Day			New Moon	
9	TO Vogue Interview FROM Wednesday Nov 26 OR Jordan Mejias 212-989-4701			10	14	15 Trisha + GLACIAL PEGGY Mussett of Art + History Geneva Switz
11	MESSAGE Arrive East #677 12:10 pm Depart East #495 10:20 pm we will pick up at airport			12	21	22
12	Phoned <input type="checkbox"/> Call Back <input type="checkbox"/> Returned Call <input type="checkbox"/> Want To See You <input type="checkbox"/> Will Call Again <input type="checkbox"/> Was In <input type="checkbox"/> See Operator <input type="checkbox"/>			13	28	29
30				Thanksgiving		Last Quarter

DOCUMENTATION IMAGES: A940 IMAGE 16



Timber wolf (*Canis lupus*), Superior National Forest, Minnesota. By John Ebeling/Bruce Coleman, Inc.

November 1990

P ^{to} Flight to Frankfurt		DATE	TIME	AM	PM
H ^{to} ...		AREA CODE—TELEPHONE NO.—OR OPER			
Sunday		Jay	Friday	Saturday	
			SACHIKA + ACATE - BACK NIC	1 TERAMAS ONE DAY FULL LEAVE MATED NC. HILL DEVIL HILL DRIVE TO JACKSONVILLE PHOTOS FIRST IN NC. 2 DAYS. JAPANESE DINNER	
			7	8	
			New Moon		
9	10	11	12	13	14
		Veterans Day			15 Trisha + Mussett of Art + History Geneva Switz
					First Quarter
16	17	18	19	20	21
				SCAR'S SERVICE CALL FOR REFRIG. IN CURTING	22
					Full Moon
23	24	25	26	27	28
30					29
			Thanksgiving		Last Quarter

DOCUMENTATION IMAGES: A940 IMAGE 17



Pronghorn (*Antilocapra americana*), Wind Cave National Park, South Dakota. By Charles Palek/Animals Animals.

December 1980

George Pompidou Photo Opening in Dec. ^{MAR.} 365-0929

Sunday	Monday	Tuesday	Wednesday	Thursday	Friday	Saturday
	1	2	3 DEC 3 - JAN 18 BOB R. SAUNDERS FRANCE Chanukah	4	5	6
7	8	9	10	11	12 DON SAFF'S BIRTHDAY	13
New Moon	14	15	16	17	18	19
First Quarter	20	21	22	23	24	25
Solstice	26	27	28	29	30	31
Full Moon	Christmas	Boxing Day (Canada)	1951 - R.R. in Colorado - March/April 1971 - 2 pieces for Ringling			
Last Quarter						

? CHK DATES IN PARIS + LONDON

DOCUMENTATION IMAGES: A940 IMAGE 18

